

318000 dwt crude oil carriers

m.t. **Lampas**

m.t. **Leonia**

m.t. **Lepeta**

m.t. **Lima**

m.t. **Liotina**



These ULCC Tankers are designed to carry crude oil and condensates. Cargo is carried in the centre and wing tanks.

The cargo pipeline system comprises four lines and pumps. The outer lines serve the wing tanks and the inner lines serve the centres, thus providing good segregation between wing tanks and centre. Cross connections allow any tank to be drained by any pump.

The vessels are able to carry out ballasting and cargo operations concurrently.

Principal Particulars

Summer dwt:	318000 tonnes.
Summer draft:	22.38 metres (73ft. 5in)
Length overall:	351.40 metres (1152ft. 11in)
Beam (extreme):	55.44 metres (181ft. 11in)
Depth (moulded):	28.75 metres (94ft. 4in)
Height (overall):	69.40 metres (227ft. 8in) keel to highest fixed point.

Year Built & Classification

Year:	1977
Classification:	Lloyds + 100 A1 oil carrier + LMC UMS

Tonnages

Gross Registered Tonnes:	153687
Net Registered Tonnes:	122871
Suez Net Tonnes:	163365
Panama Net Tonnes:	N/A
Lightship:	41460 Tonnes

Cargo Carriage Features

Total Capacity 98%:	All cargo tanks. 382956 cubic metres. (2,408,720 US barrels)
Number of Grades:	2
Inert Gas System:	Yes, with Crude Oil Wash capability.
Cargo Heating:	not available.
Tank Coating System:	none
Cargo Pumps:	4 centrifugal, self priming pumps, each 4500 m ³ /hr 1 reciprocating stripping pump, 350 m ³ /hr.

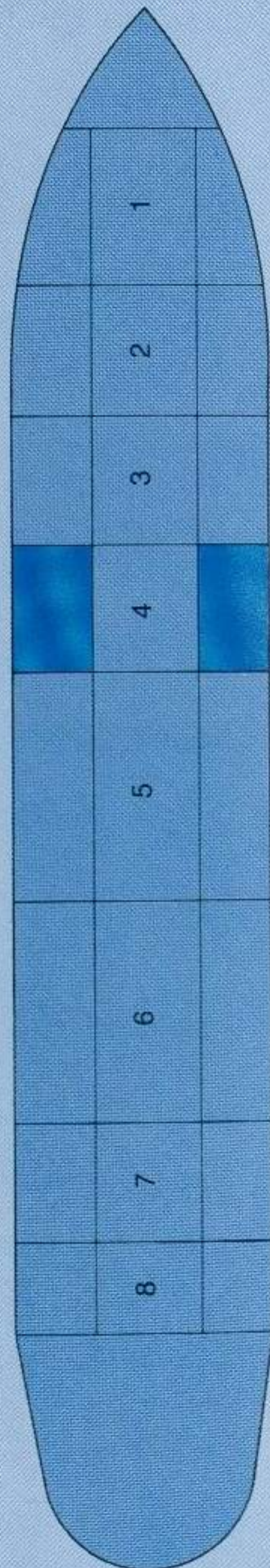
Cargo Tank Capacities

Tanks	Cu. metres 98%.
No.1C	20786
No.2C	20786
No.3C	20786
No.4C	20786
No.5C	31225
No.6C	31225
No.7C	20786
No.8C	10321
No.1Ws	23206
No.2Ws	29108
No.3Ws	29304
No.5Ws	43967
No.6Ws	43406
No.7Ws	25400
slop tks.	11864
Total	382956

Deadweight Scale (Approximate figures)

Draft (Metres)	DWT(tonnes)	Displacement(tonnes)	TPC
summer	318000	359460	175.0
22	311311	352771	174.6
21	293922	335382	173.4
20	276661	318121	172.0
19	259544	301004	170.5
18	242568	284028	169.0
17	225724	267184	167.8
16	209003	250463	166.5
15	192410	233870	165.4
14	175937	217397	164.3
13	159556	201016	163.3
12	143256	184725	162.5
11	127055	168515	161.5
10	110929	152389	160.8
9	94890	136350	159.9

Freshwater allowance 514 mm



Manifold Connections

Number and Size:	4 x 24"
Type Of Flange:	Steel
Reducers, Number and Sizes:	8 x 24"-20", 4 x 24"-16", 4 x 24"-12".
Bow to Centre of Manifolds:	175 metres
Height Above Waterline:	on SWDT draft 7.67 metres on ballast draft 17.6 metres.

Ballast Arrangements

Total Capacity of Ballast Tanks:	29878 cubic metres
Location & Type:	4 wings, permanent ballast tanks.
Ballast Pumps:	1 centrifugal pump 4250 m ³ /hr.

Mooring Equipment

Number & Location of Winches:	10, 3 forward, 1 maindeck forward, 2 maindeck aft and 4 poop.
Brake Capacity:	64 tonne.
Moorings:	Wires 14 x 280m x 44mm, 124 tonne. Ropes 2 x 420m x 72mm, 102 tonne.
Length of Anchor Cable:	14 shackles on each side
Number & Type of Bowstopper:	2 AKD SWL 200 tonne

Cranes/Derricks

Hose Handling:	2 x 15 tonne.
----------------	---------------

Particulars believed to be correct but not guaranteed.

